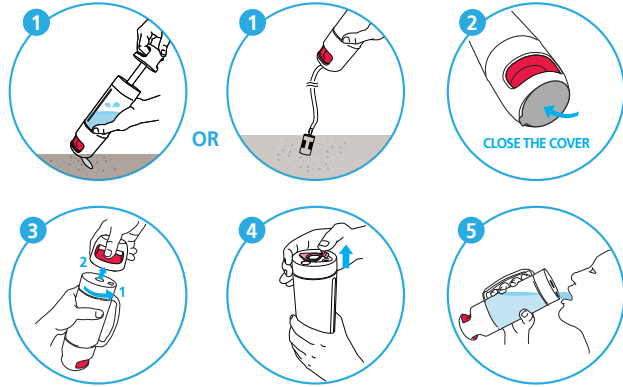




Squid Ink Test

### How to Use



### Outdoor

- Providing safe, drinkable water from outdoor water resources
- Designed with durability for extreme outdoor activity

### Hygiene

- Effective filtration
- Inner-shell protection by not allowing any of contaminated water inside the bottle
- Filters can be replaced externally, keep stored purified water safe from any other infection.

### Ergonomics

- Easy grip with an affordance design
- Easy pump for children and elderly with Universal Design

### Emergency

- Non battery operation for use in emergency situations
- Filtered Water can be shared with other people by sustainable filtration
- Usable even at shallow puddles

### Bottle Specification

Size	Ø76 X 280 mm (3inch X 11inch)
Weight	435g (15.3oz)
Capacity	400ml (13.5oz)
Suitable Water Temp	5~50°C (41~122°F)

### Filter Specification

Size	Ø38 X 96 mm (1.5inch X 3.8inch)
Weight	38g (1.3oz)
Suitable Water Temp	5~50°C (41~122°F)
Lifespan of filter	Maximum 250L tested with Korean Stream (TDS 75~200)

### Material

Bottle	PP (polypropylene)
	POM (polyoxymethylene)
	LDPE (low density poly ethylene)
	Copolyester (Tritan)
	Silicon, EPDM
	Stainless-Steel 304
Filter	ABS (acrylonitrile butadiene styrene)

### Patent

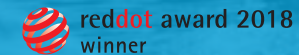
Patent	No. 10-1933634 (KR)
Patent Pending	No. 10-2017-0015168 (KR)
Design Registered	No. 30-0957509 (KR)
	No. 30-0957510 (KR)

Manufactured by:  
U2 System, Inc.  
www.purisoo.com  
purisooinfo@gmail.com

MADE IN KOREA



# Portable Water Purifier Bottle



www.purisoo.com

PORTABLE WATER PURIFIER BOTTLE



**Saving lives!**

**Can you believe a single Purisoo filter replaces 500 water bottles?**

Purisoo is a reusable, portable, premium-design purification water bottle that protects you and your family from consuming contaminated water while outdoor trekking, traveling, and during disasters.

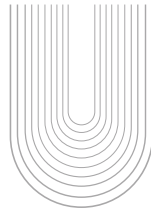
With manual pumping, almost any water source can be purified and filtered into clean, safe drinking water. Just place the bottom of the bottle into any water resource. The pump draws dirty water through the filter, filling the bottle only with clean, drinkable water.

**Contaminated water should not be put into your water bottles anymore!**

1. Place the bottom of the bottle into any water resource.
2. Pump will make fresh water pass through the filter to be filled inside.
3. 30 sec. ~ 1 min. of pumping will make around 400ml of purified water
4. Enjoy the clean, purified water by yourself or you can also share the purified water with others by more pumping.



**Triple Layer Filter Cartridge**



**Hollow Fiber Membrane**  
**99.99%**

**REMOVES**

Protozoans (Giardia, Cryptosporidium, etc.)  
Bacteria (E.coli, Salmonella, Cholera, Staphylococcus aureus, Pseudomonas aeruginosa, Shigella, etc.)  
Sediments of size 0.2 micron or larger (0.0002mm)



**Activated Carbon Fiber**

**REDUCES**

Heavy Metals / Virus (Hepatitis A, SARS, Rotavirus)  
Bad odor and taste such as Chlorine



**Fabric Filter**

**ENHANCE**

Exchangeable sieve separates solid objects from water to help extend membrane filter's lifespan.

Lifespan of Filter : Maximum 250L tested with Korean Stream (TDS 75 - 200)



**Purisoo Capsule Series**

400ml / 13.5oz



Item No.  
PC18-M2020 (Khaki)



\* Every color includes these accessories.

**PC Series Color Variations**

400ml / 13.5oz

PC18-K0303



PC18-K0505



PC18-K0000



PC18-W1515



PC18-W1313



PC18-W1010

